



ATTENTION

If any components of this unit are broken or the unit does not operate properly, please contact Cabela's Customer Service.

Retail Store Purchases: 1-800-905-2731 (U.S. & Canada)

Catalog and Internet Purchases: 1-800-237-8888

All International: 1-308-234-5555

**DO NOT RETURN THE UNIT TO THE STORE
WHERE IT WAS PURCHASED!**



MANUAL JERKY SLICER INSTRUCTIONS

MODEL # 07-3601-A



REV 032309

Cabela's[®] MANUAL JERKY SLICER

MODEL # 07-3601-A

COMPONENT LIST

DIAGRAM NO.	PART DESCRIPTION	PART NO.
1	Bottom Housing	07-3308-A
2	Top Housing	07-3307-A
3	Handle	07-3502-A
4	Auto Driving Blade Rack Assembly	07-3302
5	Stainless Steel Left Comb	07-3306
6	Stainless Steel Right Comb	07-3305
7	Housing Thumbscrew (2)	07-3166
8	Handle Thumbscrew	07-3505
9	C Clamp (2)	07-3105
10	Base	07-3111
11	Left Leg	07-3503-A
12	Right Leg	07-3504-A
13	Chute	07-3309-A
14	Nylon Bushing	07-3127
15	Stainless Steel Tongs	07-3151
16	Screw for Chute and Base (6)	07-3183
17	Screw for Legs (4)	07-3180
18	Allen Wrench for Chute & Base Screws	07-3178
19	Allen Wrench for Leg Screws	07-3185
20	Shaft Clip (2)	07-3165

DIRECTIONS FOR USE

- Remove all bones or hard items in the meat before slicing. Damage to the unit may occur if bones or hard objects are pushed through.
- Do not slice meat that is more than 1" (2.5 cm) thick. Thicker meat may get lodged in **Blades**, which may cause damage to the product.
- Insert the meat to be sliced into the mouth of the **Chute** until the meat comes in contact with the **Blades**. Turn the **Handle** in a clockwise motion. This will pull the meat through the **Blades**. Insert only one piece of meat at a time to prevent jamming.
- If a piece of meat is too short to reach the **Blades**, use the provided **Tongs** to guide the meat to the **Blades**.
- **CAUTION! DO NOT** press or push the meat into the **Chute** with your fingers or any other object. Doing so may cause personal injury and/or damage to the unit. **DO NOT** push the **Tongs** or other utensils into the **Blades**.
- Clean the unit before and after each use.

Before beginning the assembly, check the package contents for all of the parts.

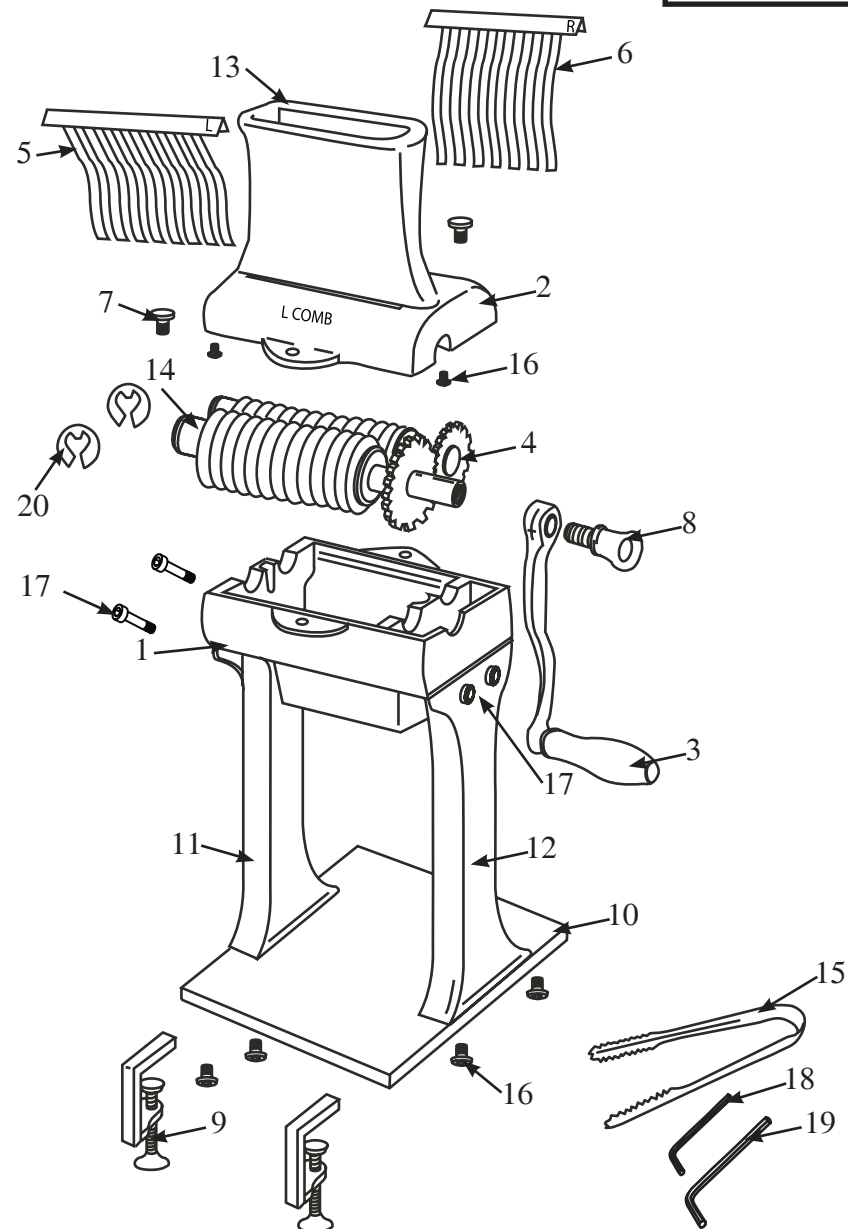
If you are missing any parts, or if any parts are damaged, contact

Cabela's Customer Service- Retail Store Purchases 1-800-905-2731 (U.S. & Canada) /
Catalog & Internet Purchases: 1-800-237-8888 / All International: 1-308-234-5555

DISASSEMBLY & CLEANING INSTRUCTIONS

1. Keep children at a safe distance from machine while cleaning.
2. Remove the **Handle Thumbscrew** from the **Handle**.
3. Remove **Handle** from the **Blade Rack Assembly**.
4. Remove the **Combs** from the **Top Housing** by lifting up on **Combs**.
5. Remove the two **Thumbscrews** from the **Top Housing**.
6. Remove the **Top Housing**. **WARNING! This will expose the Cutting Blades. Take care when handling the Blade Assembly.**
7. Using the provided **Allen Wrench**, remove the **Chute** from the **Top Housing**.
8. Carefully lift the **Blade Rack Assembly** from the **Lower Housing**.
9. Wash all parts thoroughly with warm, soapy water. Rinse with clear water. long bristle brush is recommended for cleaning the **Blade Rack Assembly**. Take extra care when handling the **Blade Racks**.
10. Dry thoroughly before re-assembling.

NOTE: It is highly suggested to coat all metal parts with a Food-Grade Silicone Spray (sold separately) to prevent corrosion.



GENERAL SAFETY RULES



READ AND FULLY UNDERSTAND ALL INSTRUCTIONS AND WARNINGS PRIOR TO USING THIS UNIT. YOUR SAFETY IS MOST IMPORTANT! FAILURE TO COMPLY WITH PROCEDURES AND SAFE GUARDS MAY RESULT IN SERIOUS INJURY OR PROPERTY DAMAGE. **REMEMBER: YOUR PERSONAL SAFETY IS YOUR RESPONSIBILITY!**

1. **NEVER REACH INTO the Jerky Slicer.** Doing so could cause serious injury. **ALWAYS USE THE PROVIDED TONGS.**
2. **KEEP FINGERS CLEAR OF THE BLADES AT ALL TIMES.** Failure to do so may result in personal injury. The **Cutting Blades/Blade Assembly** is very sharp. It is recommended to wear Kevlar, cut resistant gloves when handling the **Blades**.
3. **DO NOT** press or push meat into the **Chute** with your fingers or any other object. Doing so may cause personal injury and/or damage to the unit.
4. **NEVER** use fingers to scrape food away from the **Jerky Slicer** while the grinder is in operation. **SEVERE INJURY MAY RESULT.**
5. **DO NOT** push the **Tongs** or other utensils into the **Blades**.
6. **NEVER LEAVE THE Jerky Slicer UNATTENDED.** Close supervision is necessary when any appliance is used near children. This appliance is **NOT** to be used by children.
7. **NEVER** use any accessories or parts from other manufacturers. Doing so will VOID YOUR WARRANTY.
8. Thoroughly clean all parts that will come into contact with food before using the **Jerky Slicer**. Wash all parts by hand and dry thoroughly. **WARNING!** Protective/cut-resistant Kevlar gloves are recommended when handling the blade assembly.
9. **DO NOT** attempt to slice meat with bones or other hard items. Damage to the machine will occur.
10. **TIE BACK** loose hair and clothing, and roll up long sleeves before operating the **Jerky Slicer**. **REMOVE** ties, rings, watches, bracelets, or other jewelry before operating the **Jerky Slicer**.
11. **DO NOT** use the **Jerky Slicer** while under the influence of drugs, medications or alcohol.

SAVE THESE INSTRUCTIONS!

Refer to them often and use them to instruct others.

ASSEMBLY INSTRUCTIONS

1. Using an **Allen Wrench** and **Screws**, attach the **Left** and **Right Legs** to the **Lower Housing**. *Figure 1*

2. Connect the **Left** and **Right Legs** to the **Base** using the provided **Allen Wrench** and **Screws**.

3. Install the **Chute** to the **Top Housing** using an **Allen Wrench**, **Screws**.

4. Insert the **Blade Rack Assembly** into the **Lower Housing**, guiding the **Drive Shaft** into the bearing journals. Make sure the teeth of the **Blade Racks** are properly meshed together.

5. Position the **Top Housing** onto the **Lower Housing** and line up the screw holes.

6. Secure the **Top Housing** to the **Lower Housing** using the **Housing Thumbscrews**. **DO NOT OVERTIGHTEN!**

7. Insert the **Left Comb** and **Right Comb** into the **Top Housing**. *Figure 2*

NOTE: The **Left Comb** is marked with an "L" on the upper portion of the **Comb**. The **Top Housing** is marked with an "L Comb" and "R Comb" to aid in **Comb** installation.

8. Install **Handle** onto the **Blade Rack Shaft**.

9. Secure the **Handle** to **Blade Rack Shaft** with the **Handle Thumbscrew**.

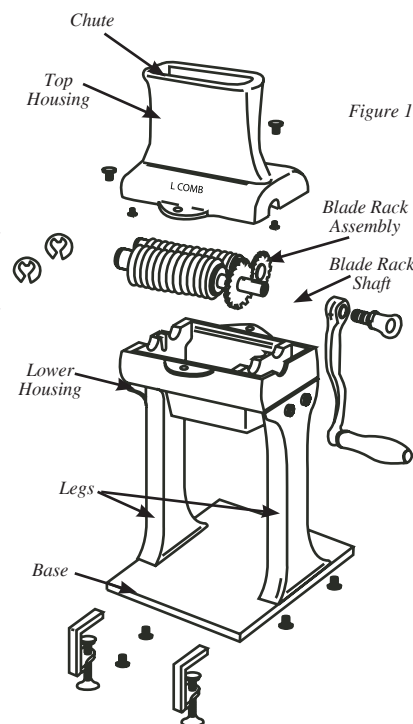


Figure 1

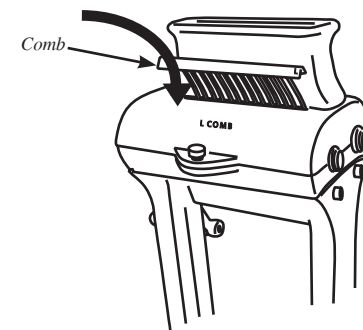


Figure 2